

260-Stinger

Bolts on with no drilling required. You must remove factory sway bar cover and bumperettes. Can be installed alone or with OEM bumper or one of Olympic 4x4's heavy-duty rock bumpers. License plate and factory fog lights must be relocated. Olympic 4x4 Products are serviced by our factory. We provide answers to installation questions. We ship parts ASAP. Try us before the hassle of returning Olympic 4x4 Products to your retailer or mail order specialist.

For assistance please call
(800) 777-0878.

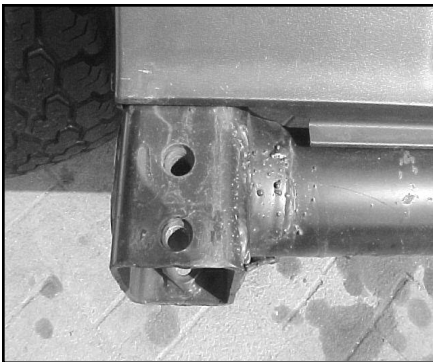


Tools required:

#55 Torx bit socket
1/2" or 3/8" drive ratchet wrench
Socket sizes: 15mm, 3/8"

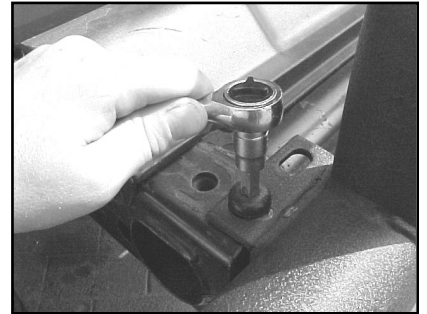
Additional hardware for 1988-95 YJ Wrangler

2 #55 Torx Metric Bumper mounting bolts
Must be purchased from Jeep dealership or hardware store. (Depending on your jeep, bolts may be metric or standard.)



Remove old bumper from vehicle frame using #55 Torx bit. Save the Torx bit bolts, they will be used to mount your new bumper. Remove the plastic sway bar cover using 3/8" wrench. For 97 and newer TJ Wranglers remove the front bolt of each sway bar mount using 15mm wrench. See photos 1&2. Arrow points to the OEM sway bar cover that must be removed. Sway bar cover is different on 1988-1995 Jeeps.

Note: If installing a winch plate, the winch plate will be installed underneath the stinger, so that the winch plate sits on the frame rails and the stinger goes over the winch plate. You may install stinger over OEM bumper or one of Olympic 4x4's Heavy-Duty Rock Bumpers. Stinger will not sit flush against OEM bumper. Certain winch plates will mount above the stinger and may have to be modified to work. The combination of some winch plates and the stinger may require you to purchase longer hardware. Longer hardware can be purchased at your local hardware store.



Step 2. Slide stinger over the vehicle frame and line up the mounting holes in the stinger with the mounting holes in the frame. See photos 3 & 4.

Step 3. Secure bumper using the Torx bit bolts you removed in step 1 and the bolts you removed from the sway bar mount (for TJ Wrangler) or (for YJ Wrangler 1988-95) Purchase 2 #55 Torx bolts and install into the rear hole of the mounting bracket that lines up with the hole in the vehicle frame. You will not use the middle hole when mounting the stinger on YJ Wranglers.

Step 4. After 500 miles or first off-road trip, re-check tightness on all nuts and bolts.